

HUNTERS®

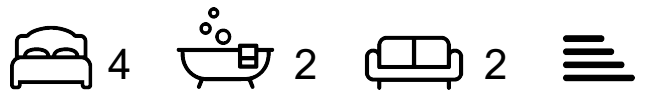
HERE TO GET *you* THERE



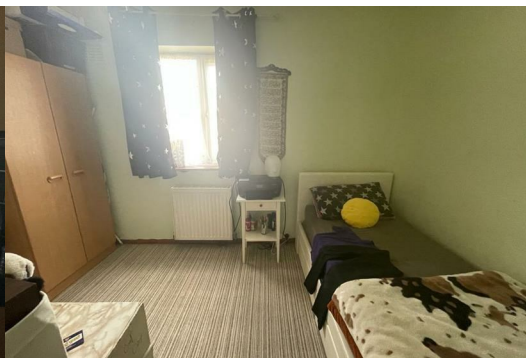
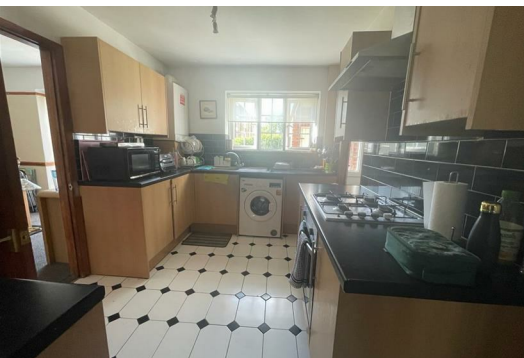
Mill Farm Crescent

Hounslow, TW4 5PG

£2,450 Per Calendar Month



A well presented three bedroom mid-terraced family home situated close to local amenities and transport links. The property benefits from generous living space with two reception rooms and a separate fully fitted kitchen. The property also benefits from a large private rear garden and off street parking for two cars. Viewings are highly recommended.



Area Map



Floor Plans



Energy Efficiency Graph



These particulars are intended to give a fair and reliable description of the property but no responsibility for any inaccuracy or error can be accepted and do not constitute an offer or contract. We have not tested any services or appliances (including central heating if fitted) referred to in these particulars and the purchasers are advised to satisfy themselves as to the working order and condition. If a property is unoccupied at any time there may be reconnection charges for any switched off/disconnected or drained services or appliances - All measurements are approximate.

THINKING OF SELLING? If you are thinking of selling your home or just curious to discover the value of your property, Hunters would be pleased to provide free, no obligation sales and marketing advice. Even if your home is outside the area covered by our local offices we can arrange a Market Appraisal through our national network of Hunters estate agents.